



PRODUCT HANDBOOK

UBITECH SOLUTIONS

Think Innovative.....



A Complete Solution of Fire Safety Equipment, Cables & Wires, Fire Fighting Panel, Fire Doors, Road Safety, Exit Lights, Signage & Suppression System & SITC



COMPANY INTRODUCTION

"UBITECH SOLUTIONS" a leading manufacturer and supplier of Fire Detection & Alarm System conventional & addressable under brand name **"AGNI TECH"**, Fire Fighting Panels, Fire Doors, Hydrant & Sprinkler System, Exit Lights, Signage, Portable Pump & Suppression System and do supply, installation, testing & commissioning. We commenced our operation in the year 2019 at New Delhi, with the main vision of Quality with customer satisfaction. We serve premier fire fighting/hydraulic rescue platforms and solar system with user friendly applications and competitive prices to reach worldwide market.

Our certified products are electrical and electronic based products where you find total solutions of traditional fire alarm and fire fighting under one roof. All the systems, components and goods supplied are assured to have the highest degree of excellence and find various applications in many segments in our day to day life.

Our Core Values:-

Quality- offering premium quality products and innovative services that meet customer needs and satisfaction.

Trust- laying the foundation of a trust-based and long-time relationship with each and every customer.

Passion- working towards retaining the best talent in the market and on creative innovative training and development programs.

Our vision is to operate our business with the highest level of integrity, responsibility and accountability and to continue to build on the trust that we have earned. We always work towards exceeding the expectations of our clients and customers. Client satisfaction has always been our prime responsibility. Our belief in building an everlasting relation with our client keeps us always energized to improvise and deliver only the best.

We look forward to a future of continued growth, prosperity and success in this industry that requires the highest standards of quality and world-class dedicated management staff of trained professional and technical team to deliver enhanced services to satisfy the different needs of our customer with utmost dedication.



MESSAGE FROM FOUNDER

“UBITECH SOLUTIONS” was an idea ahead of its time when it came into being in 2019. Our commitment and quality standards are the key factor to achieve new milestone & scale new heights each year.

We, at “UBITECH SOLUTIONS” under brand name “Agni Tech” strive to deliver the best without compromising on Quality, Commitment and Speed. We deliver the best to our clients, helping them in identifying their requirements, based on what they actually need.

Our customers have been our assets and prime movers in our journey towards service excellence and we would like to honor and return what we have received from them. It has been our endeavour, to provide services from single window with completion, quality, commitment and speed according to the requirements of client and site.

Our values are the key driving forces that help us align our organization towards customer sensitivity and deliver beyond customer's expectations.

Assuring you our best services always.

Shruti Chaudhary

Owner

Fire Alarm System

Fire Rated Door

Hydrant System

Fire Fighting Panel

Exit/ Emergency Light

Public Address System

Two Way Communication

Sprinkler Annunciator

Fire Sprinklers

Fire Extinguishers

Fire Extinguisher Ball

Cables & Wires

Portable Fire Pumps

Road Safety

Suppression System





2-Wire Photoelectric Conventional Smoke /Heat/Multi Sensors

Voltage Range	:	16-32 VDC
Alarm Current	:	10-100mA
Quiescent	:	60uA @24VDC
Operating Temperature	:	0C to + 90'C
Humidity	:	<95% RH
Coverage	:	50 sq. meters
Product Category	:	2-wire
Dimension	:	10.6x10.6x5.2cm



Standalone Type Wireless Battery Operated Smoke Detector

- Slow Responsive Optical Smoke detector with inbuilt buzzer
- Tamper resist pins for batteries
- RED LED flashes once every 45s to indicate stand By status
- RED LED flashing and buzzer sounding for alarm Indication
- Test button available
- Audio Alarm: 85-90 dB at 1 mtr.



Fire Alarm Accessories- Sounders

- Extra Hi-intensive sound (up to 120db)
- Best uses in sound polluted area like factories.
- Available in three tones and in electrical operation.
- Hooter with strobe type flasher.
- Connector is plug in type.
- Suitable for Malls, Restaurants & banks etc.



Fire Alarm Accessories- Manual Call Point

- Compatibility with any make conventional fire alarm system
- Wall mount facility
- At normal Green-LED blinking duration of 14 sec
- Steady glow of Red LED indicates the alarm condition
- Suitable for malls, restaurant, residential etc.



Fire Alarm Accessories- Response Indicator

- Compatibility with all 2 wire detectors.
- Dual Red LED indications.
- ABS Body.
- Wall Mounted / ceiling mounted

Micro Controller Based Advanced 2-4 Zone Conventional Fire Alarm Panel



- Fully Confirm IS 2189.
- 2 & 4 Zone Panels with common hooter facility.
- High Precision Fire Detection.
- Multiple-point confirmation to eliminate false Alarm.
- Zero-False Alarm Design.
- 16X2 Line LCD Display for detailed visual indication.
- Zone wise indications for fire, open and short.
- Zone Isolation facility with voltage cut off in zone line.
- Compatible with all standard 2 wire smoke and heat sensors.
- Compact Design. Inbuilt Buzzer.
- Inbuilt Battery Charger & Battery Space.
- Software locked Serial number system to identify original manufacturer

Micro Controller Based Advanced 6-8 Zone Conventional Fire Alarm Panel



- Fully Confirm IS 2189.
- 6 & 8 Zone Panels with zone wise hooter facility.
- High Precision Fire Detection.
- Multiple-point confirmation to eliminate false Alarm.
- Zero-False Alarm Design.
- 16X2 Line LCD Display for detailed visual indication.
- Zone wise indications for fire, open and short.
- Zone Isolation facility with voltage cut off in zone line.
- Compatible with all standard 2 wire smoke and heat sensors.
- Compact Design. Inbuilt Buzzer.
- Inbuilt Battery Charger & Battery Space.
- Software locked Serial number system to identify original manufacturer

Micro Controller Based Advanced 10-16 Zone Conventional Fire Alarm Panel



- Fully Confirm IS 2189.
- 10 to 16 Zone Panels with zone wise hooter facility.
- High Precision Fire Detection.
- Multiple-point confirmation to eliminate false Alarm.
- Zero-False Alarm Design.
- 16X2 Line LCD Display for detailed visual indication.
- Zone wise indications for fire, open and short.
- Zone Isolation facility with voltage cut off in zone line.
- Compatible with all standard 2 wire smoke and heat sensors.
- Compact Design. Inbuilt Buzzer.
- Inbuilt Battery Charger & Battery Space.
- Software locked Serial number system to identify original manufacturer

Micro Controller Based Advanced 18-48 Zone Conventional Fire Alarm Panel



- Fully Confirm IS 2189.
- 18 & 48 Zone Panels with zone wise hooter facility.
- High Precision Fire Detection.
- Multiple-point confirmation to eliminate false Alarm.
- Zero-False Alarm Design.
- 16X2 Line LCD Display for detailed visual indication.
- Zone wise indications for fire, open and short.
- Zone Isolation facility with voltage cut off in zone line.
- Compatible with all standard 2 wire smoke and heat sensors.
- Compact Design. Inbuilt Buzzer.
- Inbuilt Battery Charger & Battery Space.
- Software locked Serial number system to identify original manufacturer

Micro Controller Based 2-4 Loop Digital Addressable Panel



- Micro-controller based digital addressable fire alarm panel with 40X2 Character LCD Display.
- "2-4" Loop fire alarm panel with controller switch for Reset, Silence, Lamp-Test and Evacuate also with visual LED Indication of control unit & loop line.
- Each loop support 30 to 75 devices (Detector & MCP) in any combination. Total Devices can be connected up to 60 to 150.
- 32 Character field programmable point text for each sensor.
- For menu security "4" digit password protection.
- Address programming is very user friendly by ps2 keyboard. And also we can check device & module location address is in menu functions & etc.

Repeater Panel



- RS 485 repeater for main panels.
- Only 4 wire needed to repeater up to 48 Zone.
- 16 X 2 line display to show the status of main panels.
- LED indications for alarm & fault.
- No separate wiring required
- Small in size
- Zone wise repeating.

Sprinkler Annunciation Panel



- Fully microprocessor based Digital panel.
- 2 to 200 Zone expandable facility.
- Zone wise window facility.
- Fully confirm IS 2189.
- Compatible with all types of flow switches.
- Extra potential free contact facility.
- Reset, Lamp test & silence facility.

Fire Bus



- Inbuilt MCP & Hooter with single zone fire alarm.
- Battery charger & battery back-up facility.
- Best usage for Shops, Showrooms, Factories, Houses, Temporary locations and Schools.
- Small size, light weight and cylindrical shape.
- Compatible with up to 8 conventional smoke sensors (any make).
- System off, system normal, system silence facility.
- System healthy, fire, AC fail indications.
- External hooter & MCP connectivity facility.
- Inbuilt hooter with/without strobe optional.

Exit/Emergency Lights & Signage





Fire Alarm Panel with PA System

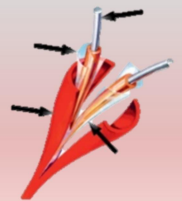
- Modular design, Plug in type solid state.
- Gold plated finger type PCB's.
- Expandable up to 2 to 50 zone fire alarm panel.
- Each zone with fire, short indication & sound.
- Associate with P.A System and Talk back System, Auto Dialler etc.
- Battery charger & Battery box facility.
- Mains, AC Fail, Rev. Battery, Fuse Blown, Fault isolate indication.
- Compatible with any make automatic detector.
- Zone wise selector with all call facility.
- Music player attachable facility.



Amplifier, Mic & Speakers. (Ahuja / Bosch)



Auto Dialler



LHS Cable



Wireless System



Flow Switch



Two Way Communications (Talk Back Master Panel/Accessories)

- Customized talk back master station.
- Used for two way communication.
- Simplex type talk back with connectivity.
- 5 to 50 zone expandable.
- Simple Operation (Press to talk facilities).
- Talk back Panel as per IS Standards.
- Best used in Multi Storey building.



We also deal in:

Fire Sprinklers Fire Bucket with Stand & Fire Man Axe



Fire Fighting Equipment



Fire Extinguisher & Balls



Road Safety



All Types of Cables & Wires



Emergency Break Glass Key Box/ Fire Pump On/Off Switch



Suppression System/Trailer Pump/ Water Mist Gun



Standalone Wi-Fi Based Smoke Detector



- Power: DC 2*1.5V AA Battery (batteries are included, 1 year battery life)
- Low Power Indicate: Audio-visual Alarm (7-15minutes)
- Hush Function: 90s
- Networking: WiFi-2.4 GHz
- WiFi Protocol: IEEE 802.11 b/g/n
- Alarm Sensitivity:0.1~0.25dB/M
- Alarm Current:0≤15mA
- Alarm Output: Audio-visual Alarm , 85db/10 feet
- Working Environment: Operation Temperature-10°C~+55°C, Operation Humidity: <95%

LPG Gas Sensor



- Power Source :220V AC/24V DC
- Detection Level :10% LEL
- Power Consumption :1.7 Watt max
- Operation Temperature :<5-50 deg C
- Working Humidity :<95% RH
- Alarm OP :85db @ 1mtr
- Product Size :135 x 137 x 50 mm (WxHxD)
- Detector Casing :ABS
- LED Indicator :Detecting
Green LED - Normal
Red LED - Alarm
- Type of Gas :+LPG
- Output :+Potential Free Relay

CO Sensor



- Voltage: DC 3V (2*1.5V AA Batteries)
- Sensor: Electrochemical CO sensor
- Battery Life: 1 year
- Standby Current: ≤10uA
- Alarm Current: ≤25mA
- Alarm Output: Audio-visual alarm
- Sound Level: 85db/10 feet
- Alarm Level: 50ppm, alarm within 60-90minutes; 100ppm,alarms within 10-40minutes; 300ppm,alarms within 3 minutes.

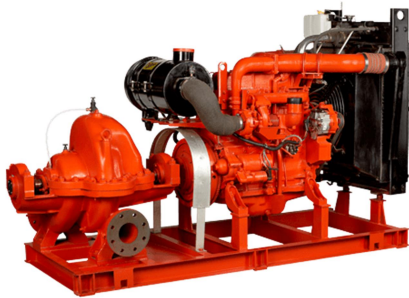
Burglar Alarm



- Working voltage: 3V(AAA battery*2)
- Working current: 19-59mA
- Standby current: ≤35uA
- Network: WIFI(802.11b/g/n)
- Wifi transmission distance: 30M(open space)
- Installation distance: ≤2CM
- Triggering distance: 2~3CM
- Working temperature: -10°C~+55°C

FM/UL Fire Fighting Pump

Key Features



- Diesel engine driven pump set
- Commercial complexes
- High rise buildings
- Airports and ports
- Oil and gas on-shore and off-shore platforms
- Petroleum and petrochemical complexes
- Power stations and transformer stations
- Warehouses
- Manufacturing and chemical industries

Portable Fire Fighting Pump



- Pump Capacity : 275 Lpm @ 4 Kg Bar
- Maximum Discharge: 500 Lpm
- Maximum Pressure: 4.0 Bar
- Primer : Exhaust Ejector Priming
- Engine Power: 9-15 HP Engines
- Weight : 80-110 Kg
- Accessories: As per requirement

Fire Fighting Mobile Foam Trolley



- Fiber Glass Tank Of Capacity 100 Litres In Yellow Finish, Optional Construction Carbon Steel Or Stainless Steel Tank Of Capacity Upto 200 Litres.
- Light Weight, Aerodynamically Shaped
- Two Solid Rubber Wheels For Easy Maneuver By One Person
- Unit Equipped With Foam Inductor, Low Expansion Branch Pipe, Fire Hoses
- Mounted With Aluminium Or Bronze Inductor Of Capacity 225 / 450 Lpm (60/120 Gpm) And Branch Pipe
- Suitable For All Type Of Foam Concentrates
- Provision For Mounting Two Fire Hoses
- Low Maintenance.

Home automation is the automatic control of electronic devices in your home. These devices are connected to the Internet, which allows them to be controlled remotely. With home automation, devices can trigger one another so you don't have to control them manually via an app or voice assistant.



Fire Fighting Panel

KEY FEATURES:

- Easy to operate
- Maintenance free
- Longer Working life
- High Performance
- Auto/Manual function

TECHNICAL SPECIFICATION:

- Application : Protection & Control of Power Distribution
- Operational Current : 4000A
- Operational Voltage : 415v
- Rated Insulation : 690v
- Ambient Temperature : 45 Degree C
- Degree of Protection : As per IS Standard
- Type Test Performed : Short Circuit Withstand
Temp Rise Withstand
Degree of Protection
- Configuration : Fixed Type
- Enclosure Type : Indoor/Outdoor
- Bus Bar : Electrolytic Grade Aluminum/Copper
- Housing : 14/16SWG



Motor Control Centre (MCC)

FEATURES:

- Remote control Operation facility
- MCCB for protection
- Change over switch for circuit change from mains to DG and vice-versa
- Direct on line starters that includes MCB, contactor, thermal overload relay and connectors
- Properly rated bus bars duly covered with acrylic sheet for safety
- GI strip for earthing
- Fan for ventilation
- Simple Operation
- Minimum Maintenance
- Durable and rust resistant



Remote Control Panel /Desk

Control Desk or Remote Control Panel is the best way to operate a panel from a remote or different location. These are designed with a height most suitable and spacious for human operation, made with the best quality push buttons & indicators. Our control desk panels are the most reliable in industry



Diesel Engine Control Panel



FEATURES:

- Auto/Manual function available
- Reset, Accept, Mute functions available
- Start fail signal available
- Trickle/Boost charging available
- Auto cut off battery charging available
- Over speed, LLOP, HWT, Audio/ Visual signal available
- Alarm facilities
- Wall mounting / floor mounting available
- Manual starts / stop function available

LT Panel

- Application : Protection & Control of Power Distribution
- Operational Current : 4000A
- Operational Voltage : 415v
- Rated Insulation : 690v
- Ambient Temperature : 45 Degree C
- Degree of Protection : As per IS Standard
- Type Test Performed : Short Circuit Withstand
Temp Rise Withstand
Degree of Protection
- Configuration : Fixed Type
- Enclosure Type : Indoor/Outdoor
- Bus Bar : Electrolytic Grade
Aluminum/Copper
- Housing : 14/16SWG



Auto Main Failure Panel (AMF)



Auto Main Failure panel, also known as AMF Panel, are used to automatically changeover from mains electricity supply to stand-by generator or genset on failure of the mains supply. When the mains supply is restored, the system automatically changes back and stops the genset.

These panels are provided with mechanically or electrically interlocked pole contactors or MCCBs. They are either installed on a wall or in a free standing outdoor cabinet with cable. The entry and exit takes place through the base using detachable aluminum gland plates.

Connection would be either hard wired or by means of single pole or multi-pin connectors. There is an inbuilt circuit, constituted so as to send a start signal to the generator, in case of mains failure. Phase sequence relay is provided to ensure that the generator supply has accurate phase rotation.

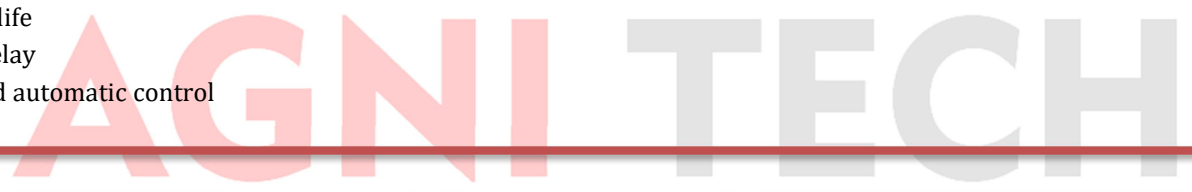
The panel can either be relay operated or PLC operated with elective features like auto start, auto changeover, no break changeover, etc.

Automatic Power Factor Control Panel

We manufacture and provide energy efficient **APFC Panels (Automatic Power Factor Control Panels)**, that are especially designed to save electricity. This panel consists of a power factor controller that monitors accurately the reactive power in power system in order to save energy. These are also used to monitor the power factor of various electrical systems. The capacitors are also provided with series reactors that minimize harmonic current which would otherwise can alter system voltage and current. To ensure long lasting & reliable operation, these equipment comes with wrapped in powder coated metal box.

Features:

- Simple operation
- Rugged construction
- Reliable performance
- Rush proof
- Trouble - free operation
- Long functional life
- Suitable APFC relay
- Both manual and automatic control



Starter Panel

TYPES OF STARTER PANEL:

Features:-

- DOL Starter
- Star-Delta Starter
- Auto - Transformer Starter
- Soft Starter
- Three Phase and single phase starter available
- Easy installation and connections
- Operating voltage - 415V
- Wall mounting / floor mounting available





120 min Steel Fire Rated Check Door

46 mm thick steel Check door of 60/120 minutes Fire rating confirming to BS ;476 Part-22 and IS : 3614 Part-II Fabricated with 2 no's 18SWG galvanized steel sheet sandwiching with proprietary fire resistant insulation materials in-between. The door frames are manufactured from 16SWG galvanized steel sheet pressed form to double rebate profile of size 143mm x 57mm. The door frame and door shutter are fitted with SS BALL BEARING HINGES (100X75X3MM) and are coated with one coat of fire and corrosion resistant primer.

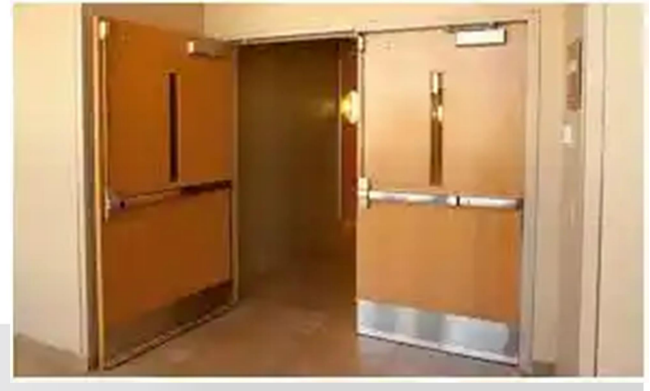
60 min Wooden Fire Rated Door

DOOR FRAME :

Wooden Door Frame of hard wood / teak wood of section 115mm x 70mm with heat activated intumescent seal strip of size 10 x 4mm and one coat of Fire & anti-termite primer.

DOOR SHUTTER :

42mm thick asbestos free composite Fire / Smoke check shutters of 60 minutes fire rating confirming to BS ; 476 Part - 22 & IS : 3614 Part - II comprising of two 12mm thick Calcium Silicate boards sandwiching 12mm thick Proprietary fire resistance insulation material faced with 3mm thick commercial ply facing on both sides with heat activated intumescent fire seal strip size 10mm x 4mm mounted in the grooves on three sides except bottom and one coat of anti-termite fire retardant primer.



120 min Wooden Fire Rated Door



DOOR FRAME :

Wooden Door Frame made of hard wood /teak wood of section 145mm x 70mm with heat activated intumescent fire seal strip of section 10mm x 4mm and one coat of Fire & anti-termite primer.

DOOR SHUTTER :

55mm thick asbestos free composite Fire / Smoke check wooden shutters of 120 minutes fire resistance rating confirming to BS : 476 Part - 22 & IS : 3614 Part - II comprising of two 12mm thick calcium silicate boards sandwiching 25mm thick proprietary fire resistance insulation material faced with 3mm commercial ply on both side with heat activated intumescent fire seal strip of size 15mm x 4mm mounted on grooves on three sides except bottom and one coat of anti-termite fire retardant primer.

Fire Cum Acoustic Door



DOOR FRAME :

Wooden Door Frame of hard wood/teak wood section 150mm x 95mm with heat activated intumescent fire seal strip of size 15mm x 4mm and finished with one coat of anti-termite fire retardant primer or paint and fitted with acoustic seal on all three sides.

DOOR SHUTTER :

65mm thick acoustic cum fire/smoke check Shutter of 38 db acoustic cum of 120 minutes rating confirming to BS 476 Part-22 & IS: 3614 part-2 comprising of sandwiching 29mm thick fire resistance insulation material between two 12mm thick calcium silicate board faced with 6mm thick commercial/teak ply with heat activated intumescent fire seal strip of size 15mm x 4mm mounted in the grooves of hardwood lipping on all three sides except bottom along with acoustic seal

Shaft Doors

Fire Shaft Door



Electrical Shaft Door



LV Shaft Door





Also deals in:

System Sensor | Ravel | Morley-IAS | Notifier |
KS Wireless Systems | GST | Honeywell | Apollo |
Ahuja PA System | Edward | Tyco | HD



Regd. Off: O-20/C2, Dilshad Garden, Delhi-110095

Mobile: +91-9711205118, 9555919954

Website: www.ubitechsolutions.co.in

Email: ubitechsolutions20@gmail.com